

General information / Informații generale / Informazioni generali

FINISHING AVAILABLE

MWH BK S

EN

System of one circuit tracks and power supply accessories for designing different spatial configurations.

On the inside, there are two copper conductors (phase and neutral) isolated from the body of track by a PVC profile and ground. The maximum voltage between phase and neutral is 250V. The maximum current is 16A.

Track body made of extruded aluminum profile, electrostatically painted.

RO

System de șine cu un circuit electric și accesorii pentru alimentarea acestora, pentru realizarea de configurații spațiale diverse.

La interior sunt două conductoare din cupru (fază și nulul de lucru) izolate față de corpul șinei printr-un profil de PVC și nulul de protecție. Tensiunea maximă admisă între fază și nulul de lucru este de 250V. Intensitatea maximă a curentului este de 16A.

Corpul șinei este confecționat din profil de aluminiu extrudat vopsit în câmp electrostatic.

IT

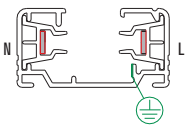
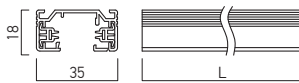
Systema a binari ad un circuito elettrico, completo di accessori per alimentazione e per le diverse configurazioni spaziali.

All'interno ci sono due conduttori in rame (fase, protezione del lavoro neutro e neutrale), isolate dal corpo attraverso un profilo in PVC rail. Tensione massima ammessa tra fase e neutro di lavoro 250V. Intensità massima corrente 16A.

Binario realizzato in estruso di alluminio, verniciato a polveri.

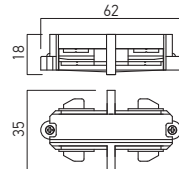
ONE CIRCUIT TRACKS

Code	Finishing	LxWxH (mm)	Weight
MT1001 MWH	MWH	1000x35x18	0,74 kg
MT1001 S	S	1000x35x18	0,74 kg
MT1001 BK	BK	1000x35x18	0,74 kg
MT1002 MWH	MWH	2000x35x18	1,09 kg
MT1002 S	S	2000x35x18	1,09 kg
MT1002 BK	BK	2000x35x18	1,09 kg
MT1003 MWH	MWH	3000x35x18	1,55 kg
MT1003 S	S	3000x35x18	1,55 kg
MT1003 BK	BK	3000x35x18	1,55 kg



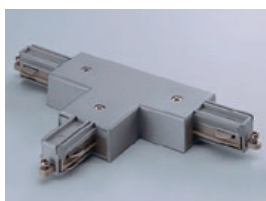
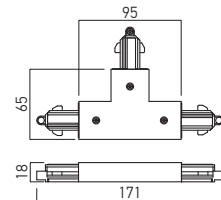
LINEAR CONNECTOR

Code	Finishing	LxWxH (mm)	Weight
MT1004 MWH	MWH	62x35x18	0,02 kg
MT1004 S	S	62x35x18	0,02 kg
MT1004 BK	BK	62x35x18	0,02 kg



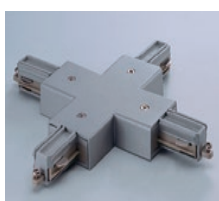
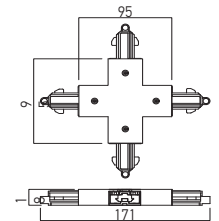
T CONNECTION AND POWERSUPPLY RIGHT-HAND

Code	Finishing	LxWxH (mm)	Weight
MT1009 MWH	MWH	171x65x18	0,10 kg
MT1009 S	S	171x65x18	0,10 kg
MT1009 BK	BK	171x65x18	0,10 kg



LEFT-HAND

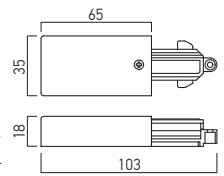
Code	Finishing	LxWxH (mm)	Weight
MT1010 MWH	MWH	171x65x18	0,10 kg
MT1010 S	S	171x65x18	0,10 kg
MT1010 BK	BK	171x65x18	0,10 kg



RIGHT/LEFT-HAND POWER SUPPLY

RIGHT-HAND

Code	Finishing	LxWxH (mm)	Weight
MT1005 MWH	MWH	103x35x18	0,04 kg
MT1005 S	S	103x35x18	0,04 kg
MT1005 BK	BK	103x35x18	0,04 kg



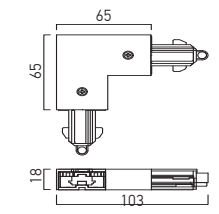
LEFT-HAND

Code	Finishing	LxWxH (mm)	Weight
MT1006 MWH	MWH	103x35x18	0,04 kg
MT1006 S	S	103x35x18	0,04 kg
MT1006 BK	BK	103x35x18	0,04 kg

L CONNECTION AND POWER SUPPLY

RIGHT-HAND

Code	Finishing	LxWxH (mm)	Weight
MT1007 MWH	MWH	103x103x18	0,08 kg
MT1007 S	S	103x103x18	0,08 kg
MT1007 BK	BK	103x103x18	0,08 kg



LEFT-HAND

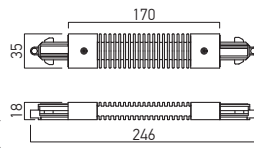
Code	Finishing	LxWxH (mm)	Weight
MT1008 MWH	MWH	103x103x18	0,08 kg
MT1008 S	S	103x103x18	0,08 kg
MT1008 BK	BK	103x103x18	0,08 kg

X CONNECTION AND POWER SUPPLY

Code	Finishing	LxWxH (mm)	Weight
MT1011 MWH	MWH	171x171x18	0,14 kg
MT1011 S	S	171x171x18	0,14 kg
MT1011 BK	BK	171x171x18	0,14 kg

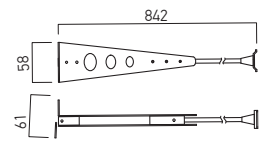
FLEXIBLE CONNECTION ELEMENT

Code	Finishing	LxWxH (mm)	Weight
MT1012 MWH	MWH	246x35x18	0,11 kg
MT1012 S	S	246x35x18	0,11 kg
MT1012 BK	BK	246x35x18	0,11 kg



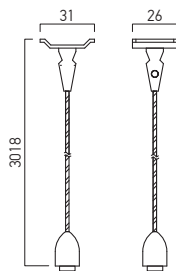
METALLIC BEARING ROD

Code	Finishing	LxWxH (mm)	Weight
MT1013 MWH	MWH	58x61x842	0,36 kg
MT1013 S	S	58x61x842	0,36 kg
MT1013 BK	BK	58x61x842	0,36 kg



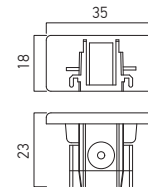
SUSPENSION KIT

Code	Finishing	LxWxH (mm)	Weight
MT1014 MWH	MWH	31x26x3018	0,65 kg
MT1014 S	S	31x26x3018	0,65 kg
MT1014 BK	BK	31x26x3018	0,65 kg



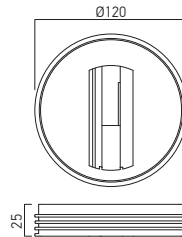
END CAP

Code	Finishing	LxWxH (mm)	Weight
MT1015 MWH	MWH	23x35x18	0,01 kg
MT1015 S	S	23x35x18	0,01 kg
MT1015 BK	BK	23x35x18	0,01 kg



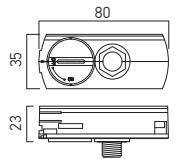
CEILING ADAPTER

Code	Finishing	ØxH (mm)	Weight
MT1016 MWH	MWH	Ø120x25	0,11 kg
MT1016 S	S	Ø120x25	0,11 kg
MT1016 BK	BK	Ø120x25	0,11 kg



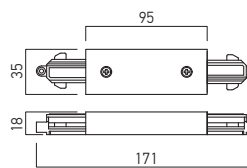
ADAPTER FOR ONE CIRCUIT TRACKS

Code	Finishing	LxWxH (mm)	Weight
MT1017 MWH	MWH	80x35x23	0,04 kg
MT1017 S	S	80x35x23	0,04 kg
MT1017 BK	BK	80x35x23	0,04 kg

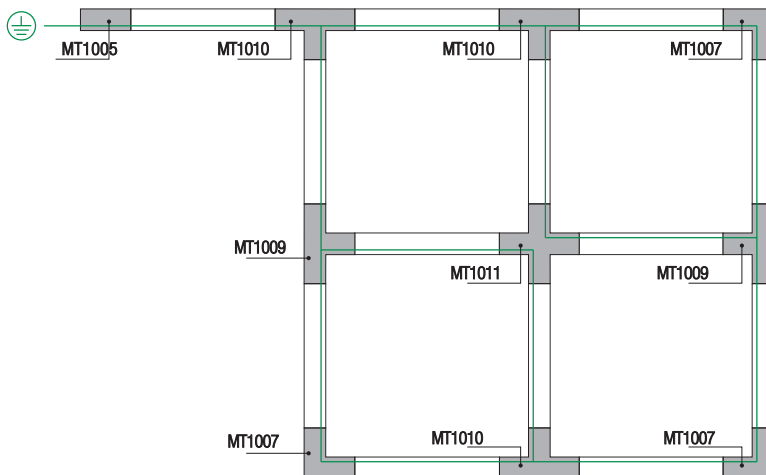


LINEAR CONNECTOR AND POWER SUPPLY

Code	Finishing	LxWxH (mm)	Weight
MT1018 MWH	MWH	171x35x18	0,07 kg
MT1018 S	S	171x35x18	0,07 kg
MT1018 BK	BK	171x35x18	0,07 kg



INSTALLATION EXAMPLE / EXEMPLU DE INSTALARE / ESEMPIO DI INSTALLAZIONE



STANDARDS
EN 60570:2003

